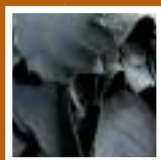


TANMA

P O W D E R
M A G N E S I U M O X I D E
F O R L E A T H E R T A N N I N G



GRECIAN MAGNESITE



TANMA is a safe, high quality basifying agent used in the tanning industry for efficient chrome fixation resulting in the production of high quality leathers.

DESCRIPTION

TANMA is a white free flowing powder processed from extra quality natural magnesite specially selected for this application. **TANMA** is carefully controlled during the purification, calcination and sizing steps to provide a consistent product with low iron, low heavy metals and well controlled chemical reactivity to fully satisfy the chrome tanning requirements.

PHYSICAL AND CHEMICAL PROPERTIES

Physical form :	Fine, white, gritless powder
Particle size :	100% below 250 microns 98% below 200 microns [EN 196]
MgO content :	94%

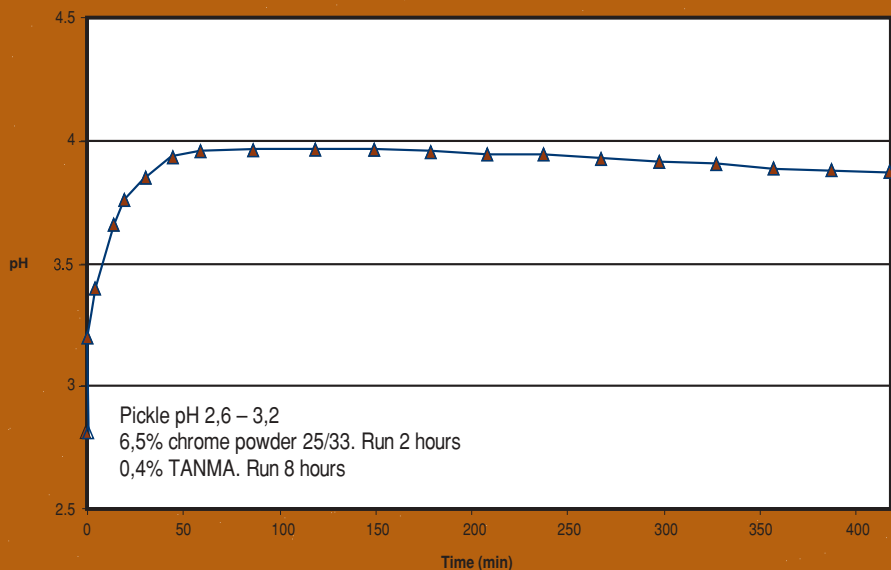
PACKAGING AND STORAGE

TANMA is packed in 25 kgs multi-ply paper sacks with one polyethylene coated ply. Big bags of 1500kgs each, with or without bottom spout are also available.



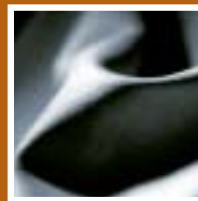
Indefinite shelf life if stored in a dry place. Partly used bags must be re-sealed.

TANMA: pH IN CHROME TANNAGE



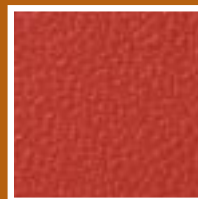
APPLICATIONS

TANMA is the ideal basifier for the chrome tannage where a slow, gradual release of alkali is required. **TANMA** is fully dissolved by the end of a 6 - 8h tannage. It is added in powder form in one dose after the chrome has penetrated the leather.



FUNCTIONS AND ADVANTAGES

- Ensures reliable performance without pH initial peaks, leading to a uniform chrome distribution throughout the leather and a smoother, finer grain.
- Reduces labour/handling costs by eliminating the need for repeated additions.
- Its microstructure and well-controlled fine particle size eliminate the risk of abrasion to the pelt and ensure consistently reliable results.
- The risk of green stains caused by local precipitation of chrome is greatly reduced.
- Enables the production of wet blue leather with a pale colour, suitable for the production of white and all dye shades.
- A higher exhaustion of chrome is achieved, leading to lower offers of chrome, with consequent cost savings and effluent improvement.
- The exhaust chrome float can be used directly or the chrome can be precipitated, dissolved and reused.



QUANTITIES AND USE

An addition of 0,3% to 0,5% of **TANMA** on limed hide weight is sufficient in most cases. Slight adjustments may be required to achieve the correct balance depending on the pH value during pickling and the quantity of chrome used.

GRECIAN MAGNESITE is a leading worldwide producer and the biggest exporter of magnesium oxide in the European Union, with a capacity of 200.000 tonnes/annum.

With a wide range of magnesium carbonate, caustic calcined magnesite, deadburned magnesite and monolithic refractory products, Grecian Magnesite covers a broad spectrum of applications and industries.

RELIABILITY IN ALL RESPECTS

- Quality assurance of our products and procedures (ISO 9001:2000 Certified).
- After sales service.
- Research and development for continuous optimisation of existing products and development of new products and applications.

OUR PRODUCTS

We are a fully integrated manufacturer, extracting magnesite from our own open cast mine in Northern Greece, mining, crushing, purifying, calcining, grinding, sieving and packing in a continuous operation.

Our state of the art technology and equipment ensure the exceptional quality and the unique consistency of all our products.



GRECIAN MAGNESITE

MINING INDUSTRIAL SHIPPING AND COMMERCIAL S.A.

HEAD OFFICE: 45 MICHALACOPOULOU STR. ATHENS

TEL.: +30 210 72.40.446-7, FAX: +30 210 72.49.711

e-mail: grecmagn@hol.gr www.grecianmagnesite.com

MINE & WORKS: GERAKINI CHALKIDIKE